

HOW DO I JOIN?

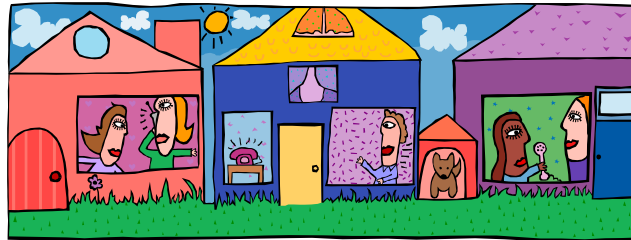
- Go to www.bmces.org and select the link to join

WHAT IF I DON'T HAVE INTERNET?

- Fill in membership form enclosed and go to these centres on these days for help:
- **Tuesday** -Mid Mountains Neighbourhood Centre, 2 New St, Lawson
- **Thursday** -Katoomba Neighbourhood Centre, 6 Station St, Katoomba

Blue Mountains Community Exchange System

CREATE COMMUNITY WEALTH
BUILD COMMUNITY
RECYCLE AND REGENERATE
SUPPORT LOCAL EQUALITY
BE SUSTAINABLE



**FOR MORE
INFORMATION**

Go to

www.bmces.org

Or call

**Katoomba Neighbourhood
Centre**

4782 1117



Blue Mountains Community Exchange System



*Local Currency for
Local Trading*

www.bmces.org

***“MONEY IS MERELY A SYMBOL AC-
CEPTED TO BE VALUABLE
THROUGHOUT THE SOCIETY THAT
USES IT. WHY SHOULD WE EVER
BE SHORT OF SYMBOLS TO KEEP AC-
COUNT OF HOW WE SERVE ONE AN-
OTHER?”***

Michael Linton – founder of LETS

Blue Mountains Community Exchange System

WHAT IS IT?

A community exchange system is simply an agreement within a community to use and accept a local currency as means of payment.

They are not intended to replace national currencies, but are meant to perform functions that current national currencies neglect - job creation, local sustainability and ensuring that wealth stays within a community.

- **It is an international movement** with over 150 different community exchanges in 20 countries including nearly 50 in Australia.
- **Better than barter** Barter is a straight one-for-one trade: I'll cook you dinner if you dig my garden. Local Currencies are more flexible as it makes it possible to trade items and services between many people.
- **LETS schemes are a form of Community Exchange.** There used to be a LETS scheme in the Mountains, which wound down in 2001 (in part due the enormous administrative load).
- **In the Blue Mountains the local currency is an "Emu"**



HOW DOES IT WORK?

Each user has an online account on the Community Exchange System website where membership details, wants and offers and transactions are recorded. This simplifies administration and allows trading between different community exchanges.

- **Being "in debit" is no disgrace** within the CES system. Accounts fluctuate happily between debit and credit as trading continues.
- **A credit represents energy and time** put into the community while a debit is a commitment to make some time or goods available at a future date.
- **You can buy something with your first trade.** If everybody had to wait to earn before they could spend, nobody would get started!
- **Account balances go up and down** in a healthy system, sometimes having a balance in credit, sometimes in debit. It makes no difference whether you have a positive or negative balance. Turnover is the issue. A high turnover means the system is working.

TO JOIN GO TO www.bmces.org

WHAT CAN I TRADE?

Everyone has something they want or can offer. You can trade any skill or thing you have - it's only limited by your imagination. **Here are a few possibilities.**



ACCOUNTING, ACCOMODATION, APPLIANCES, BABYSITTING, BOOKS, CARPOOL, COOKING, COMPOST, COMPUTER HELP, COACHING, COUNSELLING, DOG-WALKING, ELDER-CARE, EDITING, ERRAND-RUNNING, FURNITURE,



FARMING, FLOWERS, FOOD, FRAMING, FACIALS, GARDENING, GROCERY SHOPPING, GRAPHIC DESIGN, HOUSEKEEPING, HANDYMAN, HAIRCUTS, HOUSE-PAINTING, HOME MADE

BREAD, IRONING, KNITING, KITCHEN-HAND, LAWN-MOWING, MASSAGE, MANICURE, MUSIC, NURSING, OR-



GANISER, OFFICE-SPACE PHOTOGRAPHY, PET-SITTER, PLAYGROUP, REPAIRS, TUTORING, TRANSLATING, TYPING, WORKSHOPS, VEGETABLES

